

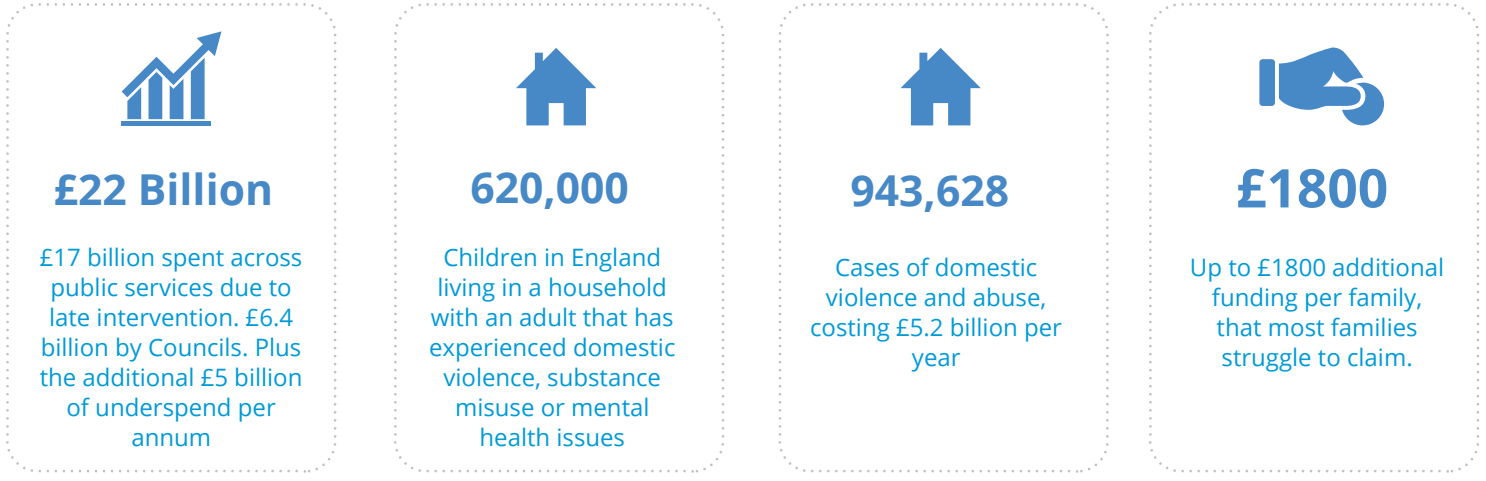


Why data matters in Supporting Families

With a growing population, it's vital for Local Authorities to utilise data to its full potential, ensuring vulnerable families and children are protected.

Supporting Families is building the resilience of vulnerable families, driving system change, and providing the right support at the right time.

The scale of the Supporting Families challenge



Identifying those in need of support

In the re-development from **Troubled Families** to **Supporting Families**, the criteria for eligibility has changed, making finding those in need trickier than before. The **Outcomes Framework have expanded from 6 to 10** this is to ensure a broad framework for supporting vulnerable people.



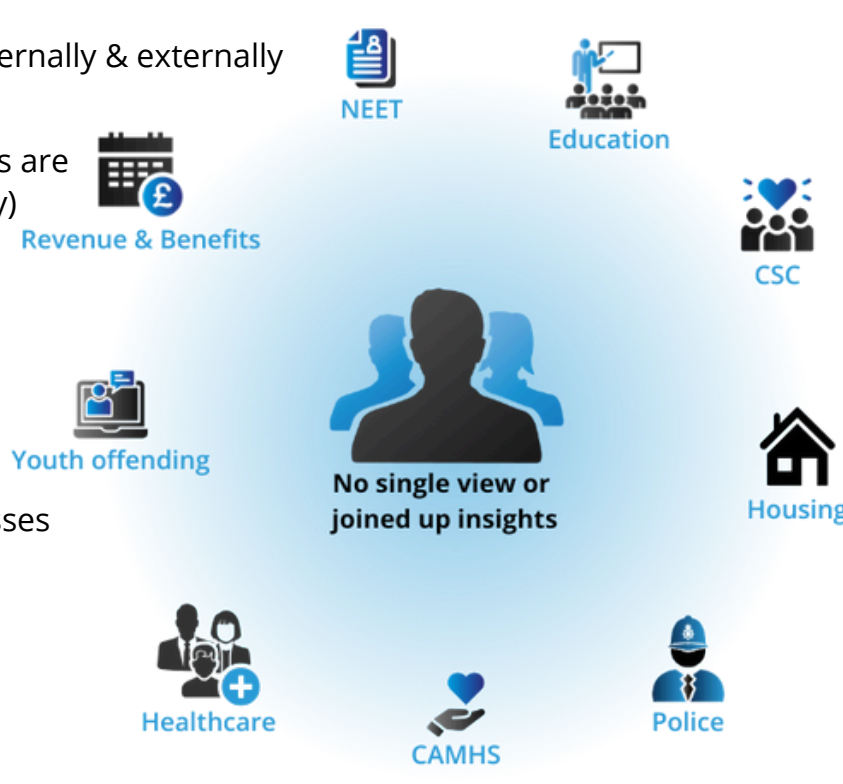
The burden of proof has also been expanded from 2 to 3 of the criteria now being met.

Up to £1,800 available for each family that an authority identify.

Data on people is now needing to be pulled from **social care, education, police, housing, and health**, and potentially wider. The capability to automatically produce a single view of a child/young person, household and family is critical in order to view them as a whole.

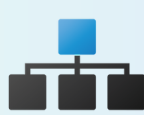
Why this is a challenge for Local Authorities

- Disconnected systems and datasets internally & externally
- No ID's across records datasets, records are inconsistent (e.g. Tom, Thomas, Tommy)
- Data Governance
- Information sharing constrained
- Lots of manual data & reporting processes
- Confidence using data
- Cloud readiness



How can Data & Insights help deliver Supporting Families

Councils require an end-to-end solution that can combine multiple sources, for identifying and reporting those in need of support powered by a Single View of the Citizen and Family.



Identification

Bringing together data from a variety of sources on to a single platform.

On-time intervention

Timely identification of families that meet the criteria and are eligible for funding.

Move towards prevention

Use data to identify the patterns and trends, to proactively prevent issues.

A complete and accurate single view of a child, household and family has the potential to **revolutionise** how Supporting Families is delivered and services collaborate across the full breadth of the council's operations.

Get started with a Supporting Families Data Platform. **Get in touch today to find out more.**

[Supporting Families Data Platform](#)